

WHY WE INVEST

in Nebraska Wesleyan University

A, AB C

2013-2014 A

G



It's All about Community

Is Nebraska Wesleyan University urban or rural?

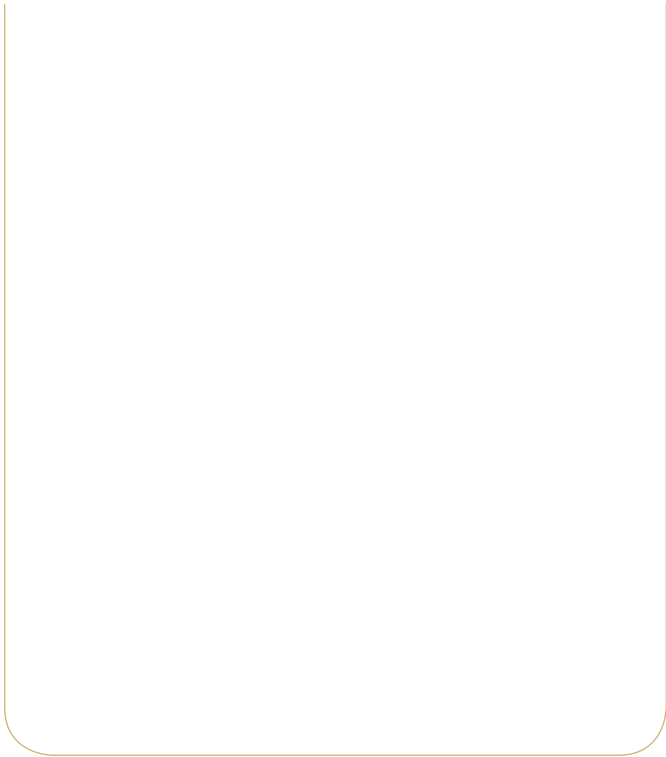
Seems like a simple question. Our campus stands in a city of more than a quarter-million people. We opened a new location this year in Omaha—a city

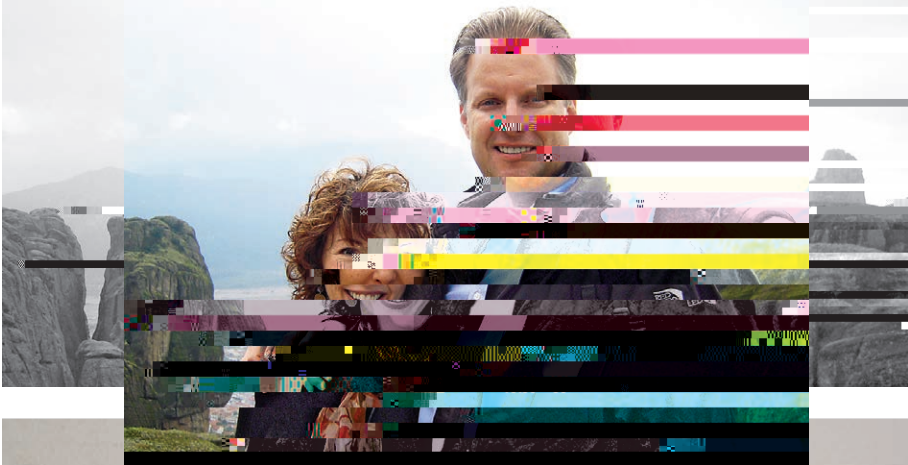




When I interviewed for my job in 1980, President John White said, “We really do well with the students we get.” And it’s still true. We turn out kids who are assets to their communities—decent human beings who do well in their careers. We do indeed get great kids and

professor emerita of history

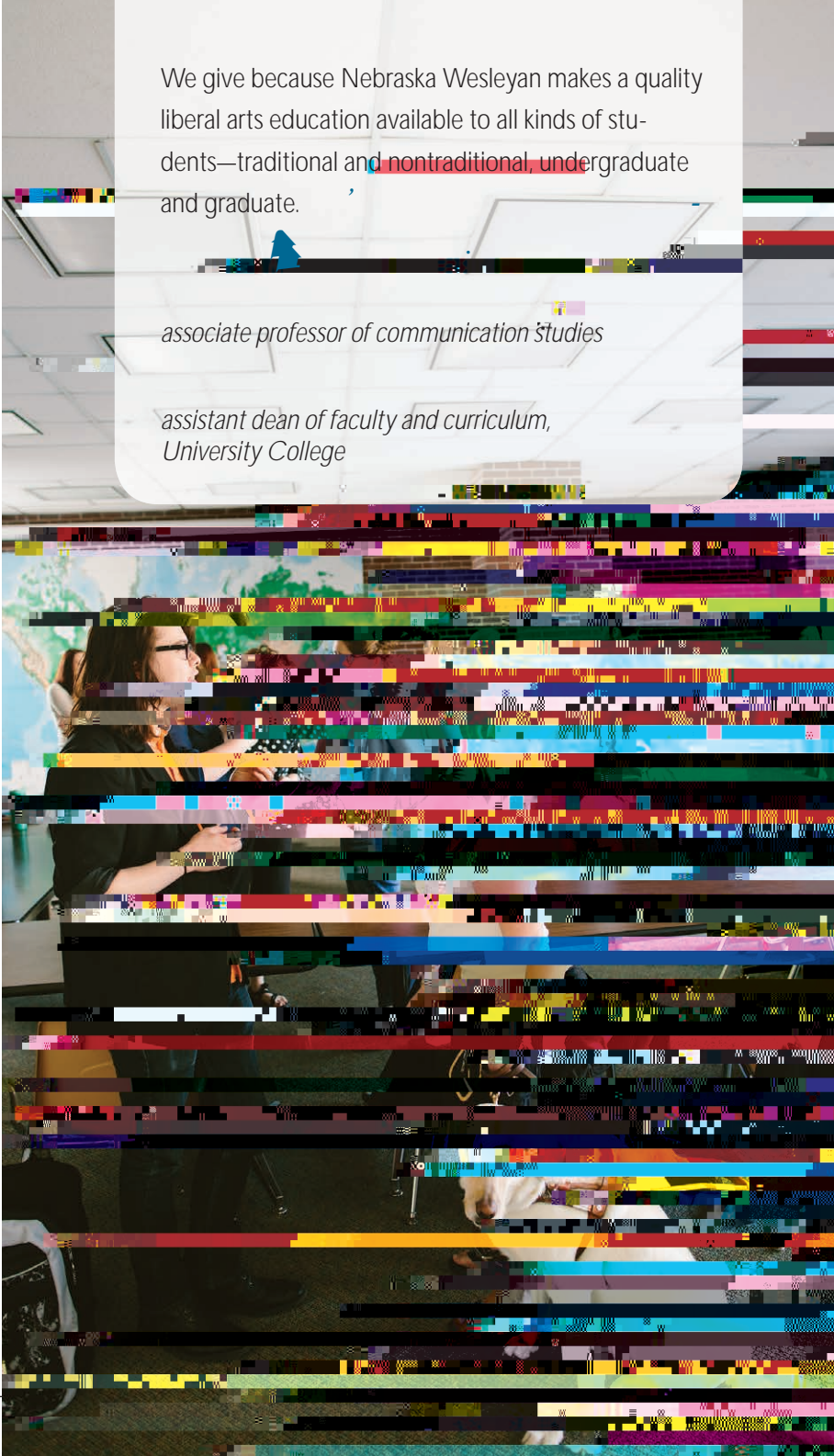
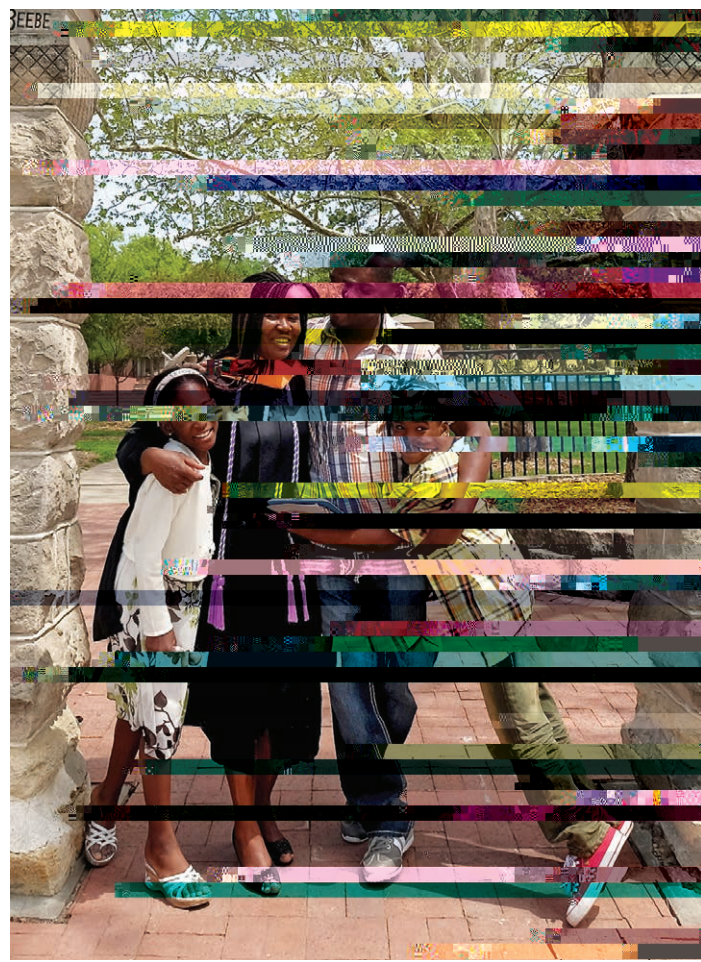
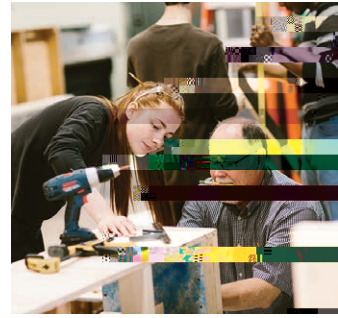




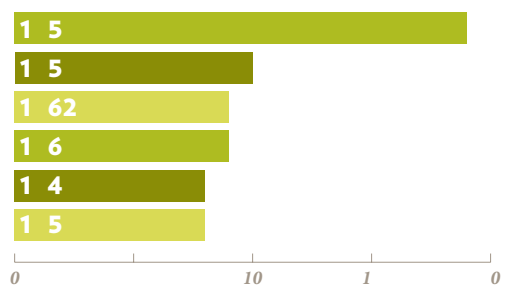
We give because Nebraska Wesleyan makes a quality liberal arts education available to all kinds of students—traditional and nontraditional, undergraduate and graduate.

associate professor of communication studies

*assistant dean of faculty and curriculum,
University College*



C A E A EDGF



Want to make a planned gift to Nebraska Wesleyan? It's easier than you might think. Brenda McCrady can help you get started. Call her at 402.465.2129.



1. **G**o to nebrwesleyan.edu/donate.
2. **W**elcome students.
3. **C**ome on the Prairie Wolves.
4. **A**ttend alumni events, catch a concert or exhibit, or take in a lecture.
5. **F**ollow NWU on Facebook, Twitter, LinkedIn and Instagram.
6. **U**psell your information on our alumni directory and connect with classmates at nebrwesleyan.edu/alumni-and-friends/alumni-directory.
7. **C**ome to homecoming and NWU holiday parties.
8. **U**psell

J. J. ... (69), M.S., chair of the board and chair of the Executive Committee; founder, Low Load Insurance Services, Tampa, Fla.

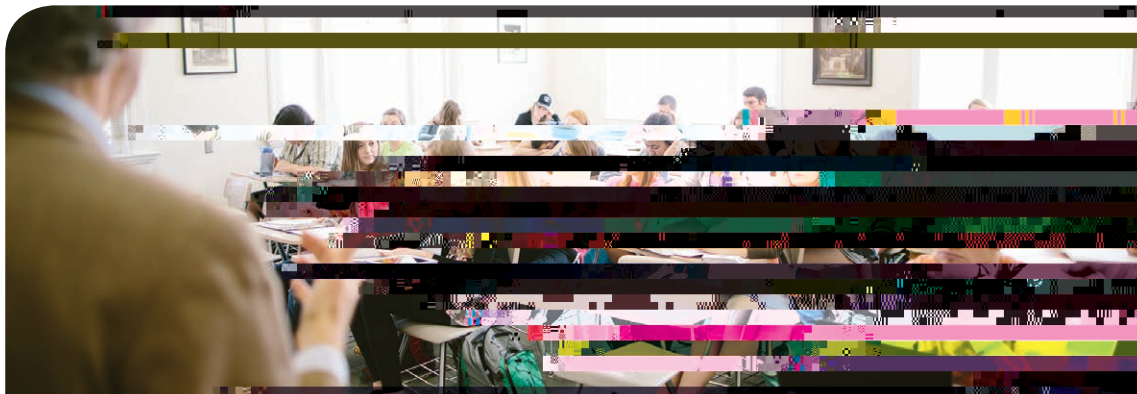
... (85), M.S., vice chair of the board and chair of the Committee on Board Affairs; Senior Vice President, Chief of Operations, Assurity Life Insurance Company, Lincoln, Neb.

A. ... (59), J.D., secretary of the board; senior counsel, Crete Carrier Corporation, Lincoln, Neb.

... (93), B.S., treasurer of the board and chair of the Finance and Audit Committee; Chief Executive, Arbor Day Foundation, Lincoln, Neb.

D. ... D. ... (88), B.S., chair of the Advancement Committee; Chairman, Duncan Aviation, Lincoln, Neb.

J. ... G. ... (76), J.D., L.H.D., chair of the Student Affairs Committee; U.S. District Court judge,



EB A A E E A E President's Board of Advisors 2014-2015

The President's Board of Advisors was formed in 2006 as a body of ambassadors and advisors to Nebraska Wesleyan. The group meets twice each year to learn more about Nebraska Wesleyan's current operations and programming, and to act as a sounding board. Its members are invited by the president and include alumni, parents of current and former students and friends of the university from around the nation and world.

F. J. ..., chair; president, Nebraska Wesleyan University

F. B. ... ('72), co-chair; attorney, Bartle & Geier Law Firm, Lincoln, Neb.

A. E. C. ... ('69), co-chair; attorney (retired), Lincoln, Neb.

J. A. ... ('97), chief business development officer, The Ezra Company, Washington, D.C.

J. B. ... ('97), Foundation First Corporation, Valley, Neb.

G. B. ... ('71), vice president, Pennfield Animal Health, Omaha, Neb.

E. B. ... ('57), businessman (retired), San Jose, Calif.

J. ... ('57), teacher (retired), San Jose, Calif.

C. ... ('80), church and community volunteer, Overland Park, Kan.

C. ... ('63), marketing consultant, Dallas, Tex.

D. D. ... ('61), attorney, Buchen, Wise and Dorr, Hanover, Penn.

(G.) F. ... ('66), NWU professor emerita of economics, Lincoln, Neb.

F. ... ('71), Lincoln Public Schools counselor (retired), Bennet, Neb.

() ... ('71), associate administrator (retired), Heartland Area Education Agency, Ankeny, Iowa

() ... ('69), psychologist, Hutchinson & Associates, Kansas City, Mo.

() ... ('06), Pastor, Trinity United Methodist Church, Lincoln, Neb.

(A.) ..., M.D., ('82, '10, '12), physician, Pediatrics, P.C., Walton, Neb.

() ... ('67), University of Washington Bothell, Secondary Teacher Education Program, Shoreline, Wash.

() ... ('97), State Farm agent, Council Bluffs, Iowa

(B.) ... ('74), director (retired), Corporate Relations, General Board of Pension/Health Benefits, The United Methodist Church, Evanston, Ill.

() ..., attorney, Kutak Rock LLP, Omaha, Neb.

() ... ('11), senior assurance associate, McGladrey, LLP, Omaha, Neb.

() ... ('01), independent hospital and healthcare professional, Omaha, Neb.

() ... ('11, '13), managing partner, Business Advisors, LLC, Englewood, Colo.

() ... ('70), president (retired), Operation Lifesaver, Alexandria, Va.

() ... ('86), managing partner, Northwestern Mutual Financial Network, Omaha, Neb.

() ... ('88, '14), President and CEO, Farmers Mutual Insurance Company of Nebraska, Lincoln, Neb.

() ... ('89), managing attorney, First Data Corporation, Omaha, Neb.

=parent of alumnus/alumna



THANK YOU.

Nebraska Wesleyan University exists for you and because of you. Our alumni and friends continue to make Nebraska Wesleyan an outstanding university with consistent, generous support.

If you've given to Nebraska Wesleyan University, accept our sincere thanks. If you haven't yet made a gift, please accept this invitation to start today.

D will be mailed in the coming days to all those who made gifts to NWU in the 2013-2014 fiscal year, which runs from June 1, 2013, to May 31, 2014.