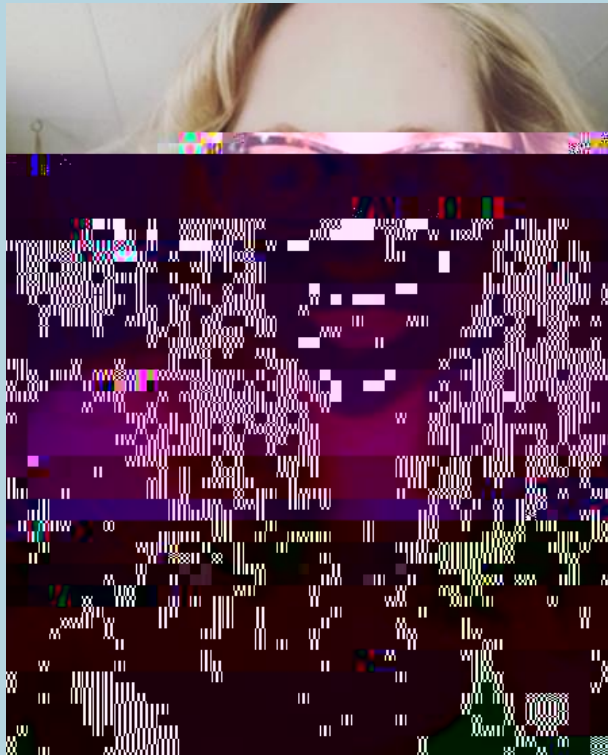




Preparation of this material was supported by grant number

Who are we?



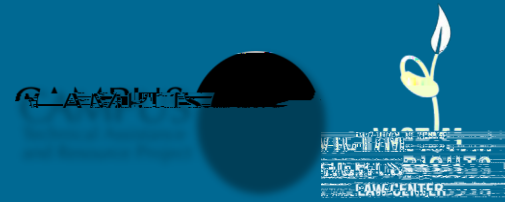
Shannon Masden, Asst. Director
Training and Consultation
smaden@victimrights.org



Lindy Aldrich
Ladder Consulting, LLC
aldrich@ladderconsulting.net



Learning Outcomes



- 1 Develop the sanctioning philosophy for your school
- 2 Learn the appropriate factors to consider when assigning sanctioning
- 3 Identify the areas that should not be considered when assigning sanctions
- 4 Understand ways to make the sanctioning process more transparent and equitable



= | _ b v u ; v o m - | ; v 7 < o † =

In a 2014 survey led by the University of Michigan,

384 university administrators at various IHEs

U H S R U W H G W K D W O H V V W K D Q '

were informed by a written sanctioning guide

G H Y H O R S H G I R U V W X G H Q W V H [X D O



Menti

Who does your sanctioning
on your campus?



What We Do vs. What We Say We Do

‡ Blurring lines between finding and sanction

‡ (PSKDVLV RQ ZKDW ZH-YH GRQI)

‡ Focus on what we think the result should be





REFLECTION

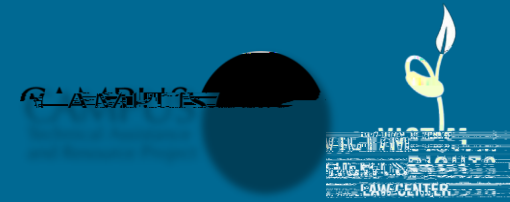
If there were NO resource limitations, how would you WANT to sanction harm or policy violations?

Menti: If you could describe your sanctioning process in one word, what would it be?





Potential Sanctioning Goals



f 3 U R W H F W & R P S O D L Q D Q W . V V D I H W \

f Protect campus safety

f Behavior change for Respondent

f Punitive

f 3 U R W H F W & R P S O D L Q D Q W . V D F F H V V W R H G X F D W

f Deter the Respondent

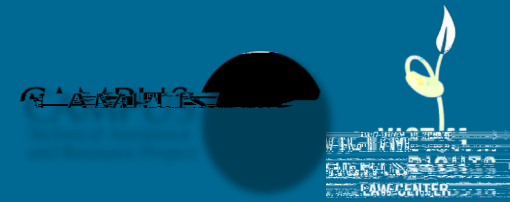
f Deter the community

f Repair the harm to the Complainant

f Repair the harm to the community

f Successful reintegration back into the campus community

Types of Sanctions



- 1 Restrictive (Ex: Housing Ban)
- 2 Exclusionary/Separation (Ex: Suspension, Dismissal)
- 3 Deterrent/Warning (Ex: Reprimand, Probation)
- 4 Educational
- 5 Interventions Outside of the University



Discussion

Question to consider:

⚖️ What factors do you consider when assigning a sanction?



Sanctioning Considerations

*f*Campus safety

f

Respondent Considerations



‡ Did the respondent accept any responsibility for their behavior?

‡ :KDW ZDV WKH UHVSRRQGHW.V XQGHUVWDQGGLQ

‡ What is necessary to prevent the recurrence of their behavior?

‡ What areas of growth are available?

‡ Previous behavior/policy violations

Complainant Considerations

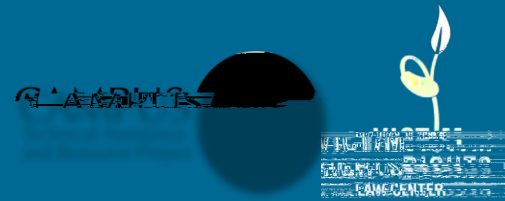
‡ Safety needs

‡ Impact of the incident (harm)

‡ Desired outcome



Tools Needed for Assigning Sanctions



1 Nature of the violation

f With a philosophy that addresses:

f Why are we sanctioning?

f What is it designed to accomplish?

f How it intends to do so?

2 List of possible sanctions (consistent with university policy for Clery purposes), including a description of each

Resources:



<https://victimrights.org/resource-library/>